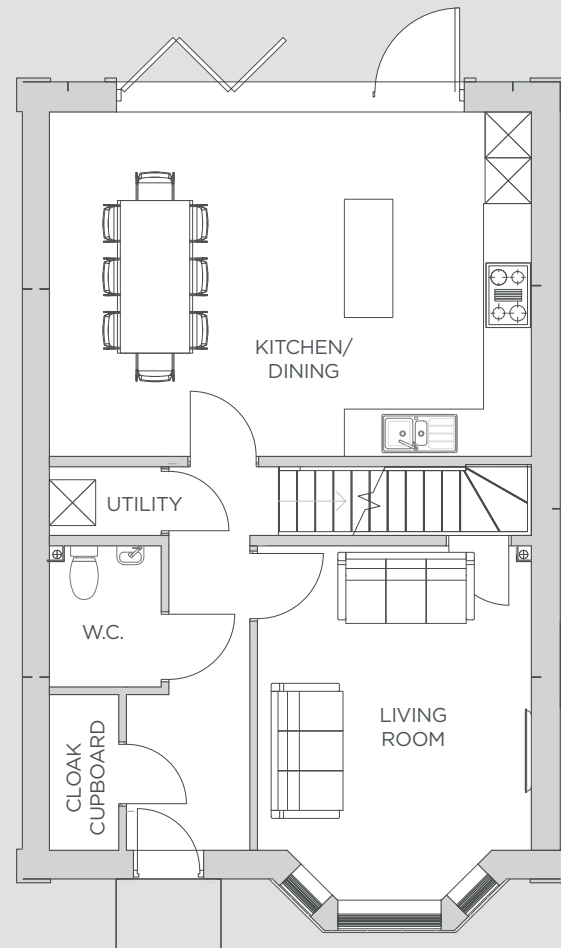


GROUND FLOOR

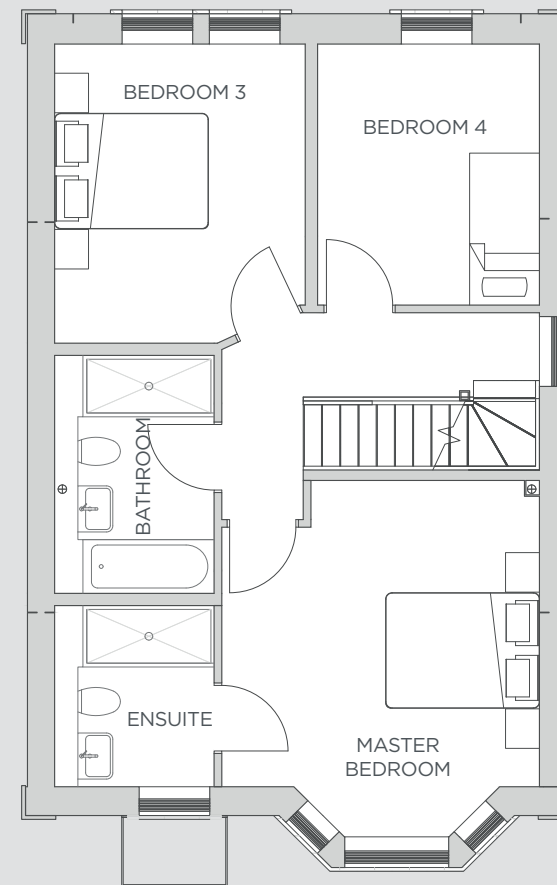
Living Room	4015mm* x 3577mm	13'2" x 11'8"
Kitchen/Diner	6282mm x 4538mm	20'7" x 14'10"

* Not including bay window



A FOUR-BEDROOM TERRACED HOME

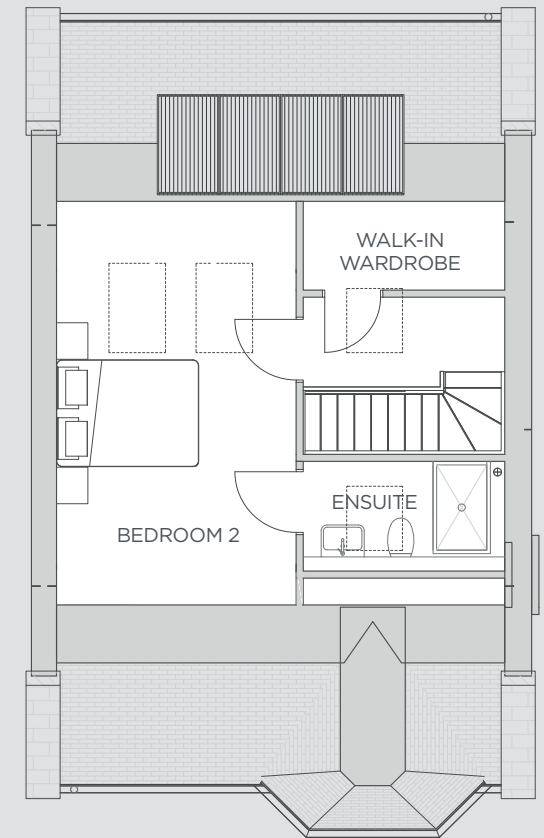
PLOTS 1, 2 & 3



FIRST FLOOR

Master Bedroom	4120mm x 4015mm*	13'6" x 13'2"*
Bedroom 3	3934mm x 3268mm	12'10" x 10'8"
Bedroom 4	3426mm x 2897mm	11'2" x 9'6"

* Not including bay window



SECOND FLOOR

Bedroom 2	4067mm x 3366mm	13'4" x 11'0"
-----------	-----------------	---------------